

\$337,500 - 5399 Len Thompson Drive, Lacombe

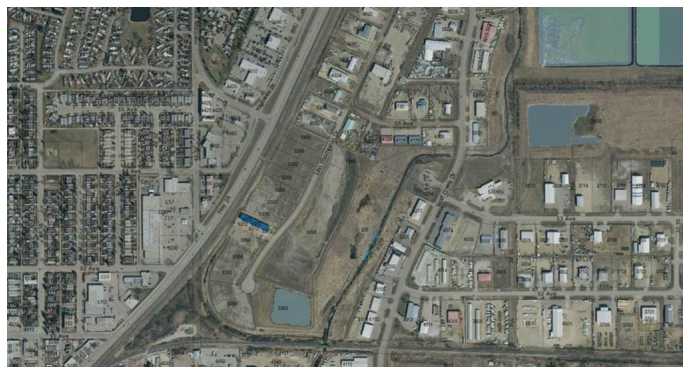
MLS® #CA0131985

\$337,500

0 Bedroom, 0.00 Bathroom,
Commercial on 1.50 Acres

Wolf Creek Industrial Park, Lacombe, Alberta

Len Thompson Industrial Park. New 15 acre industrial park strategically located in the heart of Lacombe's industrial area and will soon be home to Lacombe's new Public Works shop and yard site. Features highway exposure, access and visibility. Conveniently located next to major regional highways. Lots are zoned light industrial which provides for a large variety of permitted and discretionary uses. Subdivision is paved, shovel ready with street lights and services to lot. Currently lots are 1 to 1.5 acres in size but if you need to amalgamate 1 or more lots to make your business plan work that is easy to do. Come take a look at the City of Lacombe and its newest industrial subdivision where your business needs will be met and thrive for years to come. Note the City is also willing to look at selling a separate 7 to 10 acre parcel.



Essential Information

MLS® #	CA0131985
Price	\$337,500
Bathrooms	0.00
Acres	1.50
Type	Commercial
Sub-Type	Industrial
Status	Active

Community Information

Address 5399 Len Thompson Drive

Subdivision	Wolf Creek Industrial Park
City	Lacombe
County	Lacombe
Province	Alberta
Postal Code	T4L 2H3

Additional Information

Date Listed	April 3rd, 2018
Days on Market	2729
Zoning	I1

Listing Details

Listing Office	Royal LePage Lifestyles Realty
----------------	--------------------------------

Data is supplied by Pillar 9â„¢ MLSÂ® System. Pillar 9â„¢ is the owner of the copyright in its MLSÂ® System. Data is deemed reliable but is not guaranteed accurate by Pillar 9â„¢. The trademarks MLSÂ®, Multiple Listing ServiceÂ® and the associated logos are owned by The Canadian Real Estate Association (CREA) and identify the quality of services provided by real estate professionals who are members of CREA. Used under license.