

\$660,000 - 567 Firelight Place W, Lethbridge

MLS® #A2212856

\$660,000

5 Bedroom, 4.00 Bathroom, 2,185 sqft

Residential on 0.10 Acres

Copperwood, Lethbridge, Alberta

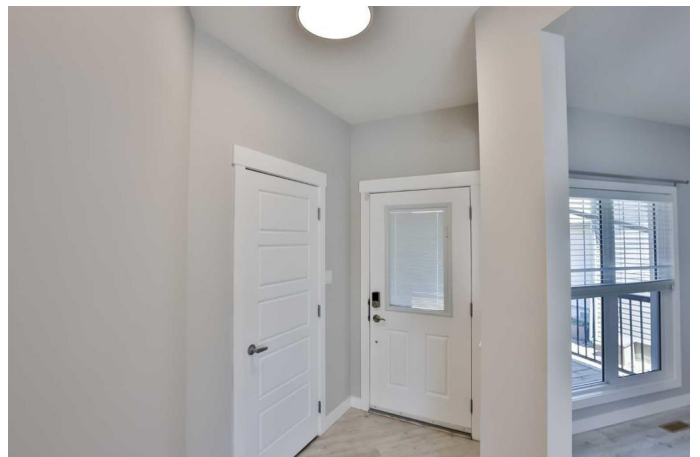
****A Rare Two-Story Floor Plan!****

This stunning home boasts four bedrooms and a bonus room upstairs! Freshly installed carpet throughout gives this home a feel of newness.

As you enter, you'll find an office space complete with a built-in desk area. The laminate flooring stretches across the entire main floor, featuring an open concept design. The spacious kitchen includes a large island, corner pantry, and stainless steel appliances, including a gas range. The living room is outfitted with a gas fireplace and mantels, along with extra built-in storage. Natural light floods the main floor, thanks to windows that stretch across the back, alongside a beautiful picture window in the dining area.

Step through the patio door onto a two-tier composite deck that overlooks your backyard, which backs onto an alley. The backyard features a play structure with pea gravel, making it perfect for your growing family!

Moving upstairs, you'll be greeted by a large picture window in the staircase and a pony wall, allowing ample light to brighten the bonus room at the top. Each bedroom has its own unique charm with features like built-in bookcases and accent walls with wainscoting or delightful wall paintings. The main bath rivals any master ensuite, equipped with a huge vanity, double sinks, tile floors, and a



five-foot tub shower. Conveniently located in the center of the upstairs is a laundry room featuring a brand-new washing machine, countertop, cabinets, and a hanging bar.

The primary suite, located at the front of the home, features vaulted ceilings and a spacious ensuite that includes, not one but two large vanities, a soaker tub, a shower, built-in shelving, and a walk-in closet!

Descend into the newly finished basement, where vinyl planking runs throughout. This expansive living area includes a large wet bar, complete with quartz countertops, a bar fridge, and stylish whiskey barrel paneling that finishes off the space beautifully!

The basement bathroom is a standout, featuring a full tile shower with a frameless door, along with a brand-new sauna that can offer both heat and steam. The sauna is adorned with tile and frameless glass doors, cedar interiors, and two benches, complete with dimmable lights that change colors—all for an installation cost of \$20,000!

Additionally, the basement includes a fifth bedroom with a small walk-in closet and a built-in desk area.

The oversized garage measures 25 feet by 30 feet deep, offering plenty of storage space!

This home is the perfect family dwelling, offering approximately 2,200 square feet plus a fully developed basement. With four bedrooms and a bonus room, this layout is truly a game-changer! It's nestled in a quiet cul-de-sac within the family-friendly community of Copperwood, which features numerous parks, playgrounds, and nearby schools.

Call your favorite realtor today to book a

showingâ€”this home is vacant and easy to show!

Built in 2015

Essential Information

MLS® #	A2212856
Price	\$660,000
Bedrooms	5
Bathrooms	4.00
Full Baths	3
Half Baths	1
Square Footage	2,185
Acres	0.10
Year Built	2015
Type	Residential
Sub-Type	Detached
Style	2 Storey
Status	Active

Community Information

Address	567 Firelight Place W
Subdivision	Copperwood
City	Lethbridge
County	Lethbridge
Province	Alberta
Postal Code	T1J 0B8

Amenities

Parking Spaces	4
Parking	Double Garage Attached
# of Garages	2

Interior

Interior Features	Built-in Features, Closet Organizers, Kitchen Island, Open Floorplan, Pantry, Quartz Counters, Walk-In Closet(s), Bar
Appliances	Bar Fridge, Central Air Conditioner, Dishwasher, Gas Stove, Microwave, Range Hood, Refrigerator, Washer/Dryer, Window Coverings
Heating	Forced Air, Natural Gas

Cooling	Central Air
Fireplace	Yes
# of Fireplaces	1
Fireplaces	Gas, Living Room
Has Basement	Yes
Basement	Finished, Full

Exterior

Exterior Features	Other
Lot Description	Back Yard
Roof	Asphalt Shingle
Construction	Vinyl Siding, Wood Frame
Foundation	Poured Concrete

Additional Information

Date Listed	April 21st, 2025
Days on Market	13
Zoning	R-CL

Listing Details

Listing Office	RE/MAX REAL ESTATE - LETHBRIDGE
----------------	---------------------------------

Data is supplied by Pillar 9â„¢ MLSÂ® System. Pillar 9â„¢ is the owner of the copyright in its MLSÂ® System. Data is deemed reliable but is not guaranteed accurate by Pillar 9â„¢. The trademarks MLSÂ®, Multiple Listing ServiceÂ® and the associated logos are owned by The Canadian Real Estate Association (CREA) and identify the quality of services provided by real estate professionals who are members of CREA. Used under license.