

# \$349,900 - 11658 Sarcee Trail Nw, Calgary

MLS® #A2212316

**\$349,900**

0 Bedroom, 0.00 Bathroom,  
Commercial on 0.00 Acres

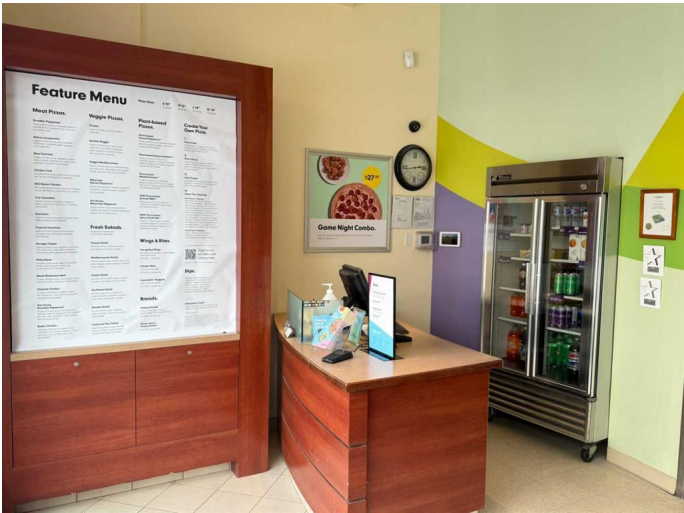
Sherwood, Calgary, Alberta

This well-established pizza restaurant franchise in northern Calgary presents an exceptional opportunity for prospective buyers. With 16 years of successful operation in a high-traffic shopping center, it stands as the only pizza restaurant in the plaza, ensuring a steady flow of loyal customers. Boasting high sales volume, driven by a robust delivery service catering to a large customer base daily, this business is a proven success. Its prime location offers significant foot traffic and visibility, making it a popular choice for both dine-in and takeout patrons. As part of a reputable franchise, the restaurant benefits from strong brand recognition and customer loyalty, cultivated over its long-standing presence in the community. With growing demand for quick-service dining and take out, there is ample opportunity for further growth and expansion, particularly in delivery services. This is a perfect chance to invest in a thriving business within Calgary’s dynamic food scene, offering a solid foundation and a promising future.

Built in 2008

## Essential Information

MLS® #	A2212316
Price	\$349,900
Bathrooms	0.00
Acres	0.00



Year Built	2008
Type	Commercial
Sub-Type	Business
Status	Active

### Community Information

Address	11658 Sarcee Trail Nw
Subdivision	Sherwood
City	Calgary
County	Calgary
Province	Alberta
Postal Code	T3R0A1

### Additional Information

Date Listed	April 14th, 2025
Days on Market	23

### Listing Details

Listing Office	LPT Realty
----------------	------------

Data is supplied by Pillar 9â„¢ MLS® System. Pillar 9â„¢ is the owner of the copyright in its MLS® System. Data is deemed reliable but is not guaranteed accurate by Pillar 9â„¢. The trademarks MLS®, Multiple Listing Service® and the associated logos are owned by The Canadian Real Estate Association (CREA) and identify the quality of services provided by real estate professionals who are members of CREA. Used under license.