

# \$1,159,888 - 9 Aspenshire Crescent Sw, Calgary

MLS® #A2212122

**\$1,159,888**

3 Bedroom, 3.00 Bathroom, 2,407 sqft

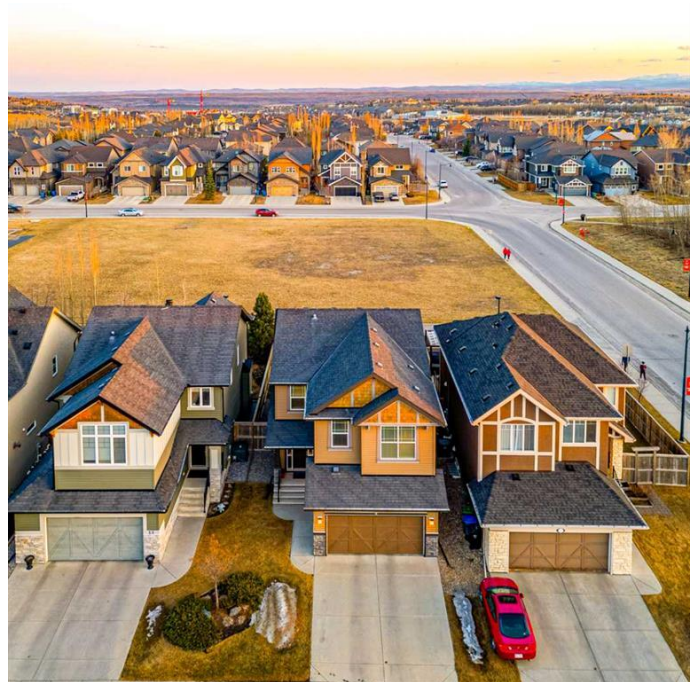
Residential on 0.09 Acres

Aspen Woods, Calgary, Alberta

**\*\* OPEN HOUSE \*\*** Saturday, May 10 | 2:00  
to 3:30 PM **\*\*** Join us for an afternoon  
walk-through and discover everything this  
remarkable home has to offer! Welcome to 9  
Aspenshire Crescent, ideally situated in the  
highly sought-after Aspen community, directly  
across from charming Bumblebee Park. This  
beautifully appointed home boasts a private,  
south-facing backyard offering rare tranquility  
and privacy. Featuring over 2,400 sq ft of  
thoughtfully designed living space plus an  
additional 1,000 sq ft available in the  
unfinished basement, this home provides  
abundant room for your family to grow.

Step inside to discover 9 ft ceilings, upgraded  
engineered hardwood flooring on the main  
floor with an increased plank width from 2.5" to 5", ceramic tile, and a bright,  
open-concept layout complemented by  
expansive south-facing windows that fill the  
home with natural light. At the front, find a  
spacious home office, versatile enough to  
serve as a formal dining room or flex space.

The inviting living room, centered around a  
cozy gas fireplace, flows seamlessly into a  
spacious dining area—perfect for hosting  
family gatherings and celebrations. The  
gourmet kitchen is a chef's dream,  
showcasing elegant granite countertops,  
maple cabinetry, a large central island ideal for  
casual dining and meal preparation, and  
premium stainless steel appliances.



Upstairs, enjoy plush upgraded carpetingâ€”thicker and softer than standardâ€”throughout, a striking vaulted-ceiling bonus room, and three generously-sized bedrooms, each complete with its own walk-in closet. The primary suite provides a luxurious retreat featuring a spacious 5-piece ensuite with a convenient pocket door, his & her sinks, a shower with a built-in seat, a jetted tub, and an expansive walk-in closet. Convenience is key with an upper-level laundry room and an additional 4-piece bathroom.

The south-facing backyard is fully fenced and includes a sunny deck with stylish glass panel railingsâ€”perfect for relaxing, entertaining, or soaking up the sun. Conveniently located within walking distance to top-rated schools including Webber Academy, Guardian Angel, and Roberta Bondar, as well as the upscale shops and amenities at Aspen Landing Shopping Centre, this home offers a premium lifestyle in a premier location.

Built in 2010

**Essential Information**

MLS® #	A2212122
Price	\$1,159,888
Bedrooms	3
Bathrooms	3.00
Full Baths	2
Half Baths	1
Square Footage	2,407
Acres	0.09
Year Built	2010
Type	Residential
Sub-Type	Detached

Style	2 Storey
Status	Active

### Community Information

Address	9 Aspenshire Crescent Sw
Subdivision	Aspen Woods
City	Calgary
County	Calgary
Province	Alberta
Postal Code	T3H 0R4

### Amenities

Parking Spaces	2
Parking	Double Garage Attached
# of Garages	2

### Interior

Interior Features	Granite Counters, Kitchen Island, No Smoking Home, Open Floorplan, Pantry, Walk-In Closet(s)
Appliances	Dishwasher, Electric Stove, Garage Control(s), Microwave, Range Hood, Refrigerator, Washer/Dryer
Heating	Forced Air
Cooling	None
Fireplace	Yes
# of Fireplaces	1
Fireplaces	Gas
Has Basement	Yes
Basement	Full, Unfinished

### Exterior

Exterior Features	None
Lot Description	Cul-De-Sac, Few Trees, Low Maintenance Landscape, Rectangular Lot
Roof	Asphalt Shingle
Construction	Vinyl Siding, Wood Frame
Foundation	Poured Concrete

### Additional Information

Date Listed	April 22nd, 2025
Days on Market	15

Zoning R-G

Listing Details

Listing Office eXp Realty

Data is supplied by Pillar 9â,,ç MLSÂ® System. Pillar 9â,,ç is the owner of the copyright in its MLSÂ® System. Data is deemed reliable but is not guaranteed accurate by Pillar 9â,,ç. The trademarks MLSÂ®, Multiple Listing ServiceÂ® and the associated logos are owned by The Canadian Real Estate Association (CREA) and identify the quality of services provided by real estate professionals who are members of CREA. Used under license.