

\$119,900 - 112, 1616 Saamis Drive Nw, Medicine Hat

MLS® #A2211707

\$119,900

1 Bedroom, 1.00 Bathroom, 556 sqft

Residential on 0.00 Acres

Northwest Crescent Heights, Medicine Hat, Alberta

River view one bedroom plus living room located in Axxess condos. This main floor unit has full river valley views from southern exposure. Primary bedroom is a good sized and separate living room/den plus an eat in kitchen area with sliding doors to the covered deck. The four piece bathroom also has the laundry area. Well kept building, this unit comes with an assigned parking stall with plug in outside. This unit is being sold "as is, where is" on date of possession.

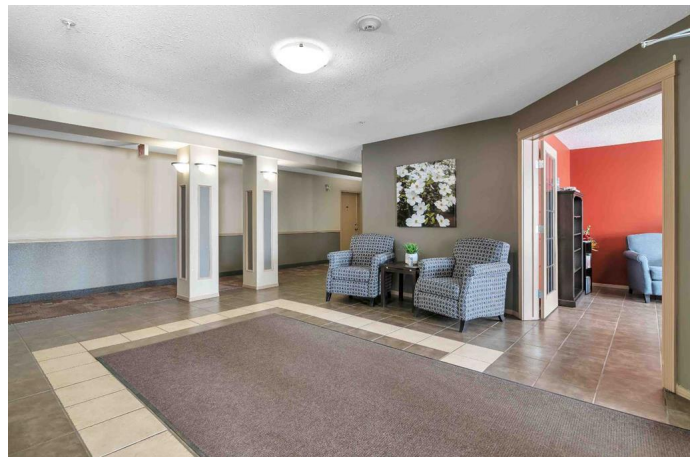
Built in 2006

Essential Information

MLS® #	A2211707
Price	\$119,900
Bedrooms	1
Bathrooms	1.00
Full Baths	1
Square Footage	556
Acres	0.00
Year Built	2006
Type	Residential
Sub-Type	Apartment
Style	Single Level Unit
Status	Active

Community Information

Address 112, 1616 Saamis Drive Nw



Subdivision	Northwest Crescent Heights
City	Medicine Hat
County	Medicine Hat
Province	Alberta
Postal Code	T1C4X2

Amenities

Amenities	Other
Parking Spaces	1
Parking	Assigned, Plug-In, Stall

Interior

Interior Features	See Remarks
Appliances	See Remarks
Heating	Baseboard, Natural Gas
Cooling	Wall Unit(s)
# of Stories	4

Exterior

Exterior Features	None
Roof	Asphalt Shingle
Construction	Brick, Vinyl Siding

Additional Information

Date Listed	April 15th, 2025
Days on Market	15
Zoning	R-MD

Listing Details

Listing Office	MAXWELL CANYON CREEK
----------------	----------------------

Data is supplied by Pillar 9â„¸ MLSÂ® System. Pillar 9â„¸ is the owner of the copyright in its MLSÂ® System. Data is deemed reliable but is not guaranteed accurate by Pillar 9â„¸. The trademarks MLSÂ®, Multiple Listing ServiceÂ® and the associated logos are owned by The Canadian Real Estate Association (CREA) and identify the quality of services provided by real estate professionals who are members of CREA. Used under license.