

\$115,000 - 5933 88 Street, Grande Prairie

MLS® #A2210931

\$115,000

0 Bedroom, 0.00 Bathroom,
Land on 0.12 Acres

N/A, Grande Prairie, Alberta

Build Your New Home in Southwynd Estates!
Now availableâ€”a fully serviced residential lot,
ready for construction! Located in the
desirable Southwynd Estates community on
the southeast corner of Grande Prairie, this
pie-shaped lot is ideally positioned beside an
easement and backs onto a scenic walking
path with no rear neighbours.
This is one of the most desirable remaining
lots in the areaâ€”don't miss your chance to
make it yours!
Price does not include GST.

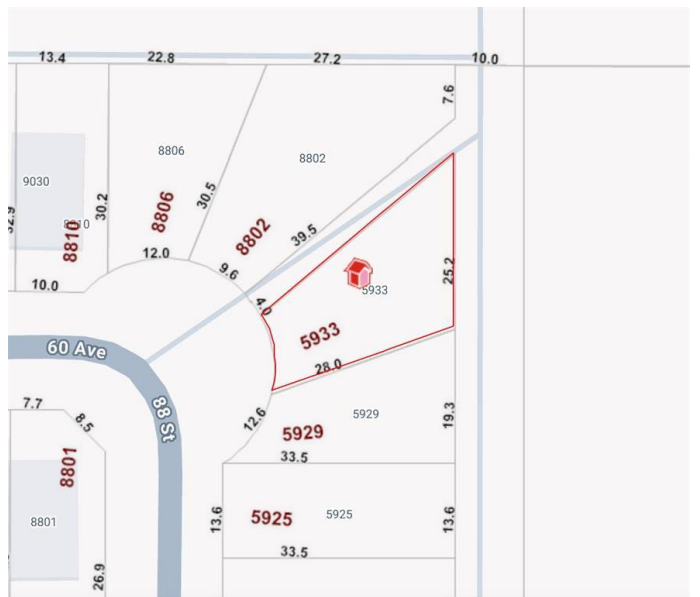


Essential Information

MLS® #	A2210931
Price	\$115,000
Bathrooms	0.00
Acres	0.12
Type	Land
Sub-Type	Residential Land
Status	Active

Community Information

Address	5933 88 Street
Subdivision	N/A
City	Grande Prairie
County	Grande Prairie
Province	Alberta
Postal Code	T8W 0J9



Additional Information

Date Listed	April 24th, 2025
Days on Market	8
Zoning	RS

Listing Details

Listing Office	Grassroots Realty Group Ltd.
----------------	------------------------------

Data is supplied by Pillar 9â„¢ MLS® System. Pillar 9â„¢ is the owner of the copyright in its MLS® System. Data is deemed reliable but is not guaranteed accurate by Pillar 9â„¢. The trademarks MLS®, Multiple Listing Service® and the associated logos are owned by The Canadian Real Estate Association (CREA) and identify the quality of services provided by real estate professionals who are members of CREA. Used under license.