

\$799,900 - 102, 25 Beju Industrial Drive Drive, Sylvan Lake

MLS® #A2206340

\$799,900

0 Bedroom, 0.00 Bathroom,
Commercial on 0.00 Acres

Beju Industrial Park, Sylvan Lake, Alberta

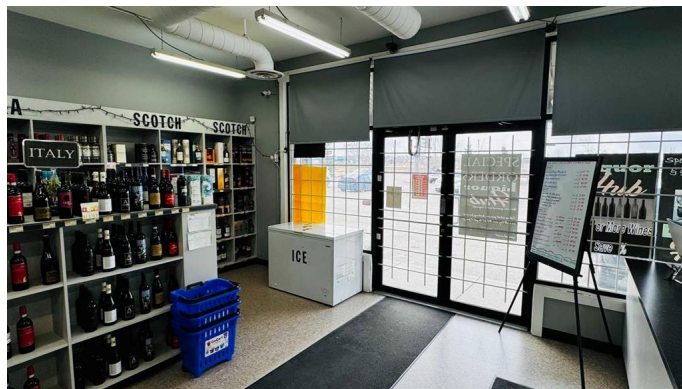
Successfull business in thriving Sylvan Lake!! This 2600 Sq Ft Industrial condominium is in an incredible location right in the heart of Sylvan Lakes industrial/ commercial area, with high volumes of traffic, and great exposure! A well established business generating consistent revenue. With an expansive lot, and rear sliding commercial door access, unloading of inventory is a breeze. Complete with ample shelving and refrigerator space, this store is as organized as it is eye appealing. A user friendly thorough camera system already installed, and potential for expanding or building the upstairs storage space. The Land, building and business are for sale. Inventory is not included in the purchase price.

Built in 2014

Essential Information

| | |
|------------|------------|
| MLS® # | A2206340 |
| Price | \$799,900 |
| Bathrooms | 0.00 |
| Acres | 0.00 |
| Year Built | 2014 |
| Type | Commercial |
| Sub-Type | Industrial |
| Status | Active |

Community Information



| | |
|-------------|-------------------------------------|
| Address | 102, 25 Beju Industrial Drive Drive |
| Subdivision | Beju Industrial Park |
| City | Sylvan Lake |
| County | Red Deer County |
| Province | Alberta |
| Postal Code | T4S 0K9 |

Interior

| | |
|---------|-------------------------|
| Heating | Forced Air, Natural Gas |
|---------|-------------------------|

Additional Information

| | |
|----------------|-----------------|
| Date Listed | April 4th, 2025 |
| Days on Market | 32 |
| Zoning | CH |

Listing Details

| | |
|----------------|---------------------------|
| Listing Office | Century 21 Gillany Realty |
|----------------|---------------------------|

Data is supplied by Pillar 9â„¢ MLS® System. Pillar 9â„¢ is the owner of the copyright in its MLS® System. Data is deemed reliable but is not guaranteed accurate by Pillar 9â„¢. The trademarks MLS®, Multiple Listing Service® and the associated logos are owned by The Canadian Real Estate Association (CREA) and identify the quality of services provided by real estate professionals who are members of CREA. Used under license.