

\$5,480 - 101, 11225 98 Avenue, Grande Prairie

MLS® #A2201241

\$5,480

0 Bedroom, 0.00 Bathroom,
Commercial on 0.00 Acres

Richmond Industrial Park, Grande Prairie,
Alberta

Great Location in Richmond Industrial Park!
5480 sqft consisting of approximately 3480sqft
of shop space with 2 bay doors and
approximately 2000 sqft of office space, also
included is plenty of yard space and plenty of
parking!. Base rent \$12.00/sqft = \$5480.00
plus CA Costs of \$8.00/sqft (includes heat
power and water = \$3653.33 per month. Total
\$9,590.00 includes GST. Space can be
leased out with Unit 201 above. Note this is a
sublease with the current tenant

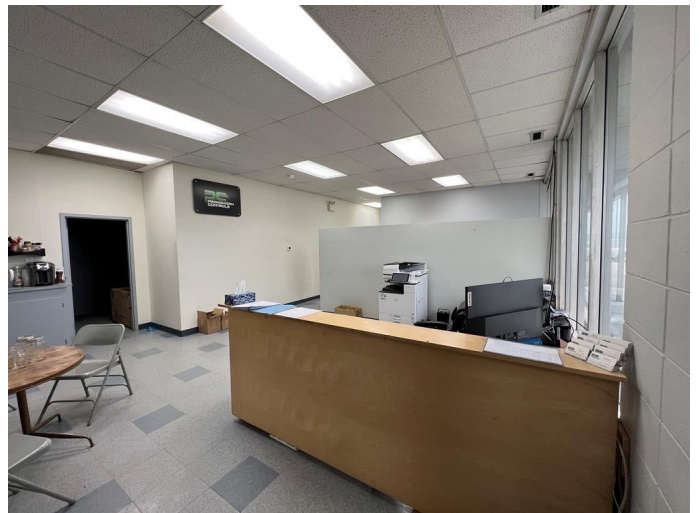
Built in 1978

Essential Information

| | |
|------------|------------|
| MLS® # | A2201241 |
| Price | \$5,480 |
| Bathrooms | 0.00 |
| Acres | 0.00 |
| Year Built | 1978 |
| Type | Commercial |
| Sub-Type | Office |
| Status | Active |

Community Information

| | |
|-------------|--------------------------|
| Address | 101, 11225 98 Avenue |
| Subdivision | Richmond Industrial Park |
| City | Grande Prairie |
| County | Grande Prairie |
| Province | Alberta |



Postal Code T8V5A5

Amenities

Utilities Cable Available, Phone Available, High Speed Internet Available

Additional Information

Date Listed March 11th, 2025

Days on Market 64

Zoning IG

Listing Details

Listing Office RE/MAX Grande Prairie

Data is supplied by Pillar 9â„¢ MLSÂ® System. Pillar 9â„¢ is the owner of the copyright in its MLSÂ® System. Data is deemed reliable but is not guaranteed accurate by Pillar 9â„¢. The trademarks MLSÂ®, Multiple Listing ServiceÂ® and the associated logos are owned by The Canadian Real Estate Association (CREA) and identify the quality of services provided by real estate professionals who are members of CREA. Used under license.