

\$210,000 - 161, 13412 Lakeland Dr, Lac La Biche

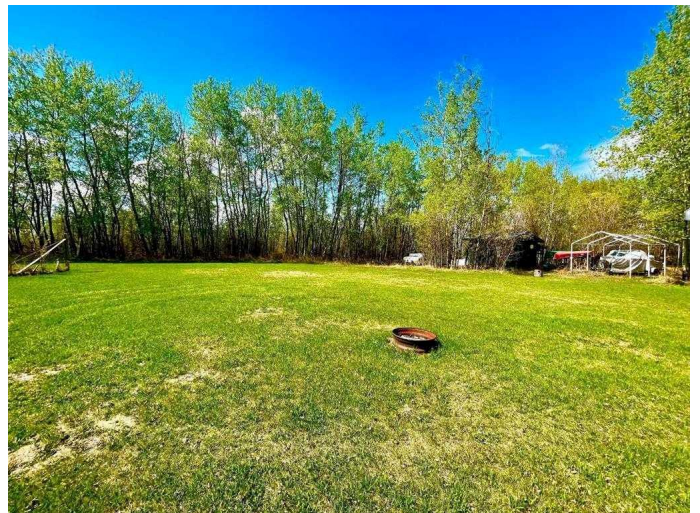
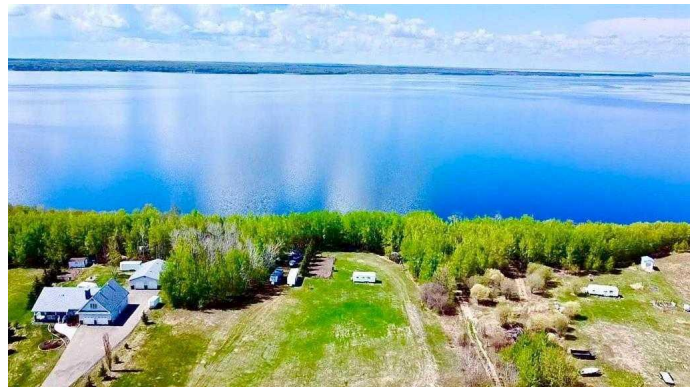
MLS® #A2177611

\$210,000

0 Bedroom, 0.00 Bathroom,
Land on 1.09 Acres

Lac La Biche, Lac La Biche, Alberta

Lakefront-Great Location! Over one acre property is a great location for building or for getaway at Wedgewood Estates. Natural gas, municipal water and sewer at the property line. Paid power, fenced garden and stunning sunset views!! Located on pavement just 5 minutes from town. Your family will love lakefront living with paved walkways to town, Churchill Park, and the Lac La Biche Golf Course! This leveled acreage has opened lawn area, treed campsite, and lakefront! Enjoy fishing, swimming, boating, water skiing or just relax and enjoy the beautiful sunsets!!!



Essential Information

MLS® #	A2177611
Price	\$210,000
Bathrooms	0.00
Acres	1.09
Type	Land
Sub-Type	Residential Land
Status	Active

Community Information

Address	161, 13412 Lakeland Dr
Subdivision	Lac La Biche
City	Lac La Biche
County	Lac La Biche County
Province	Alberta
Postal Code	T0A 2C0

Amenities

Is Waterfront Yes

Exterior

Lot Description Back Yard, Cleared, Near Shopping Center, No Neighbours Behind, Landscaped, Open Lot, Near Golf Course, Lake, Near Public Transit, Waterfront

Additional Information

Date Listed November 6th, 2024

Days on Market 179

Zoning Country Residential

Listing Details

Listing Office People 1st Realty

Data is supplied by Pillar 9â„¢ MLS® System. Pillar 9â„¢ is the owner of the copyright in its MLS® System. Data is deemed reliable but is not guaranteed accurate by Pillar 9â„¢. The trademarks MLS®, Multiple Listing Service® and the associated logos are owned by The Canadian Real Estate Association (CREA) and identify the quality of services provided by real estate professionals who are members of CREA. Used under license.