

# \$14 - 11032 100 Street, Grande Prairie

MLS® #A2166553

**\$14**

0 Bedroom, 0.00 Bathroom,  
Commercial on 0.17 Acres

Avondale., Grande Prairie, Alberta

Get your business noticed! Retail /showroom space with frontage onto the very busy 100 St. This mostly wide open canvas is 3200 Sq Ft and features a fenced compound. Flexible zoning allows for a lot of different uses. Also available for sale MLS# A2166555. Base Rent is only \$3733.33/month, Additional Rent is \$1312.00 /month for a Total of \$5045.33 plus GST.

Built in 1969

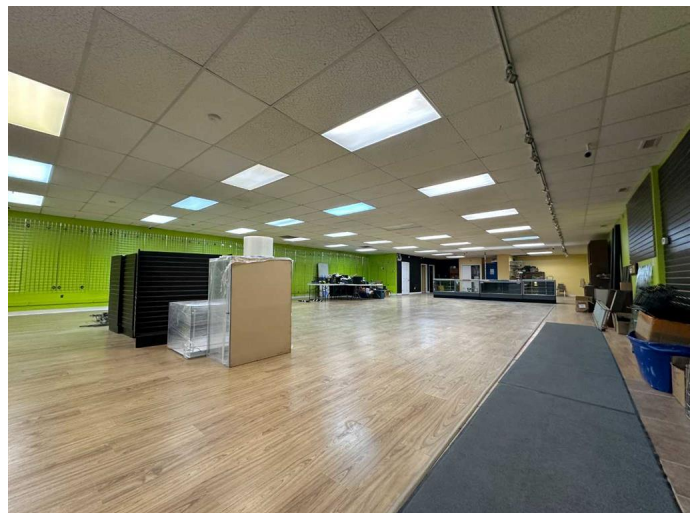
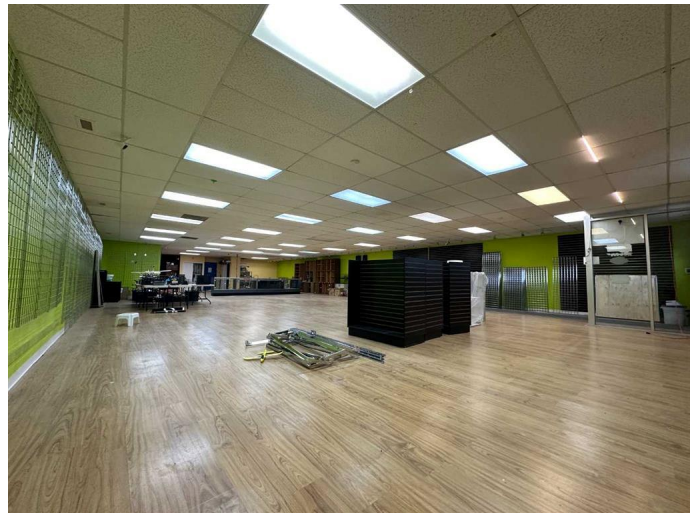
## Essential Information

|            |            |
|------------|------------|
| MLS® #     | A2166553   |
| Price      | \$14       |
| Bathrooms  | 0.00       |
| Acres      | 0.17       |
| Year Built | 1969       |
| Type       | Commercial |
| Sub-Type   | Retail     |
| Status     | Active     |

## Community Information

|             |                  |
|-------------|------------------|
| Address     | 11032 100 Street |
| Subdivision | Avondale.        |
| City        | Grande Prairie   |
| County      | Grande Prairie   |
| Province    | Alberta          |
| Postal Code | T8V2N1           |

## Additional Information



|                |                      |
|----------------|----------------------|
| Date Listed    | September 17th, 2024 |
| Days on Market | 231                  |
| Zoning         | CA                   |

**Listing Details**

|                |                       |
|----------------|-----------------------|
| Listing Office | RE/MAX Grande Prairie |
|----------------|-----------------------|

Data is supplied by Pillar 9â„¢ MLS® System. Pillar 9â„¢ is the owner of the copyright in its MLS® System. Data is deemed reliable but is not guaranteed accurate by Pillar 9â„¢. The trademarks MLS®, Multiple Listing Service® and the associated logos are owned by The Canadian Real Estate Association (CREA) and identify the quality of services provided by real estate professionals who are members of CREA. Used under license.