

# \$499,000 - 205, 1111 Olympic Way Se, Calgary

MLS® #A2136739

**\$499,000**

0 Bedroom, 0.00 Bathroom,  
Commercial on 0.00 Acres

Beltline, Calgary, Alberta

Click brochure link for more details\*\* Arriva is a 3-storey building containing 61,499 square feet of retail and office space. The property is located in Victoria Park, Calgary's up-and-coming events and culture district. It is surrounded by historic buildings, new restaurants and green spaces bordering the Elbow River. Arriva is directly across from the Stampede Grounds and the Scotiabank Saddledome.

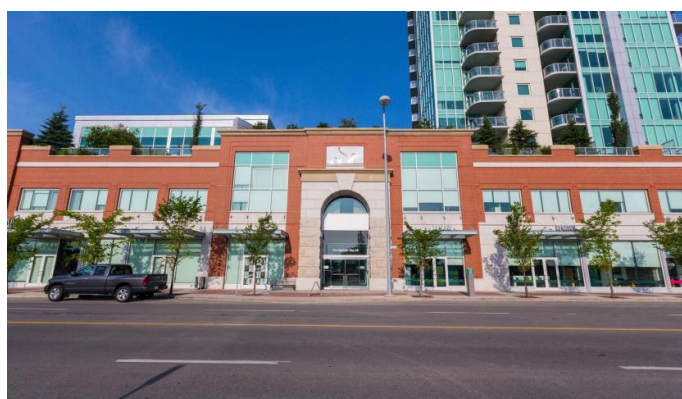
Built in 2007

## Essential Information

MLS® #	A2136739
Price	\$499,000
Bathrooms	0.00
Acres	0.00
Year Built	2007
Type	Commercial
Sub-Type	Office
Status	Active

## Community Information

Address	205, 1111 Olympic Way Se
Subdivision	Beltline
City	Calgary
County	Calgary
Province	Alberta
Postal Code	T2G 0L4



**Additional Information**

Date Listed	May 30th, 2024
Days on Market	348
Zoning	Direct Control

**Listing Details**

Listing Office	Honestdoor Inc.
----------------	-----------------

Data is supplied by Pillar 9â„¢ MLS® System. Pillar 9â„¢ is the owner of the copyright in its MLS® System. Data is deemed reliable but is not guaranteed accurate by Pillar 9â„¢. The trademarks MLS®, Multiple Listing Service® and the associated logos are owned by The Canadian Real Estate Association (CREA) and identify the quality of services provided by real estate professionals who are members of CREA. Used under license.