

\$70,000 - 9118 134 Avenue, Peace River

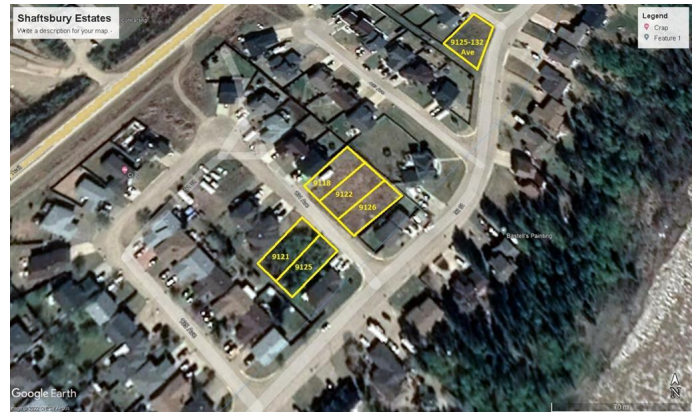
MLS® #A1231700

\$70,000

0 Bedroom, 0.00 Bathroom,
Land on 0.14 Acres

Shaftesbury Estates, Peace River, Alberta

Large lot in Shaftesbury Estates waiting for its next new owner to develop. Shaftesbury Estates is a great place to raise your family with playgrounds and walking trails nearby. If you are looking to build, the owner has many lots and options available. Call for details.



Essential Information

MLS® #	A1231700
Price	\$70,000
Bathrooms	0.00
Acres	0.14
Type	Land
Sub-Type	Residential Land
Status	Active

Community Information

Address	9118 134 Avenue
Subdivision	Shaftesbury Estates
City	Peace River
County	Peace No. 135, M.D. of
Province	Alberta
Postal Code	T8S 1X1

Additional Information

Date Listed	June 20th, 2022
Days on Market	1047
Zoning	R1

Listing Details

Data is supplied by Pillar 9â„¢ MLSÂ® System. Pillar 9â„¢ is the owner of the copyright in its MLSÂ® System. Data is deemed reliable but is not guaranteed accurate by Pillar 9â„¢. The trademarks MLSÂ®, Multiple Listing ServiceÂ® and the associated logos are owned by The Canadian Real Estate Association (CREA) and identify the quality of services provided by real estate professionals who are members of CREA. Used under license.